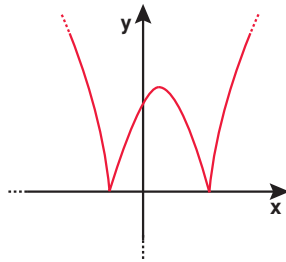
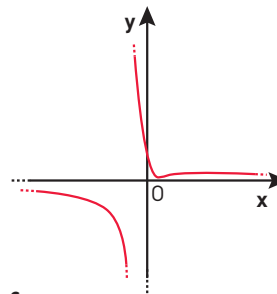


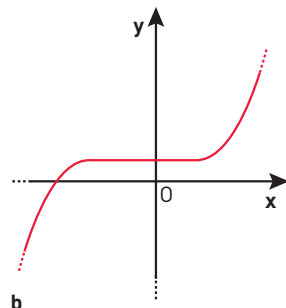
YOU & MATHS **Injective, surjective or bijective?** For each of the following graphs determine whether the function it represents is injective, surjective, or bijective.



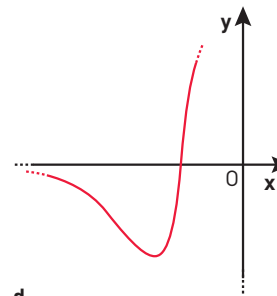
a



c



b



d

- a. This graph represents a function that is neither injective nor surjective.
- b. This graph represents a function that is surjective but not injective.
- c. This graph represents function that is neither injective nor surjective.
- d. This graph represents a function that is neither injective nor surjective.