

Unit 9

Esercizi di recupero

A. Fill in the table with the correct tenses.

IF SENTENCES		
	Part with IF	Consequence
Type 0	simple present
Type 1	future (.....+ verb)
Type 2	simple	conditional+ verb)
Type 3	past perfect (.....+ past participle)	past conditional (would have +)

B. Write one of the following letters next to each sentence: S for scientific fact, R for hypothesis related to reality, F for fantasy, U for unreal hypothesis related to the past.

- If water freezes, it turns to ice.
- If I had a spaceship, I would go to Jupiter.
- If Columbus had not discovered America, the Native Indians would not have lost their lands.
- If you tell anybody about my secret, I will never talk to you again.
- If your brother had not used your car, he wouldn't have had an accident.
- Butter melts if you heat it.
- If John invites me to his birthday party, I will be very happy.
- I wouldn't buy the ticket for that concert if I were you: it's too expensive!

C. Now translate the sentences in B.

-
-
-
-
-
-
-
-

D. Write one personal example for each type of conditional sentence.

.....

.....

.....

.....

.....

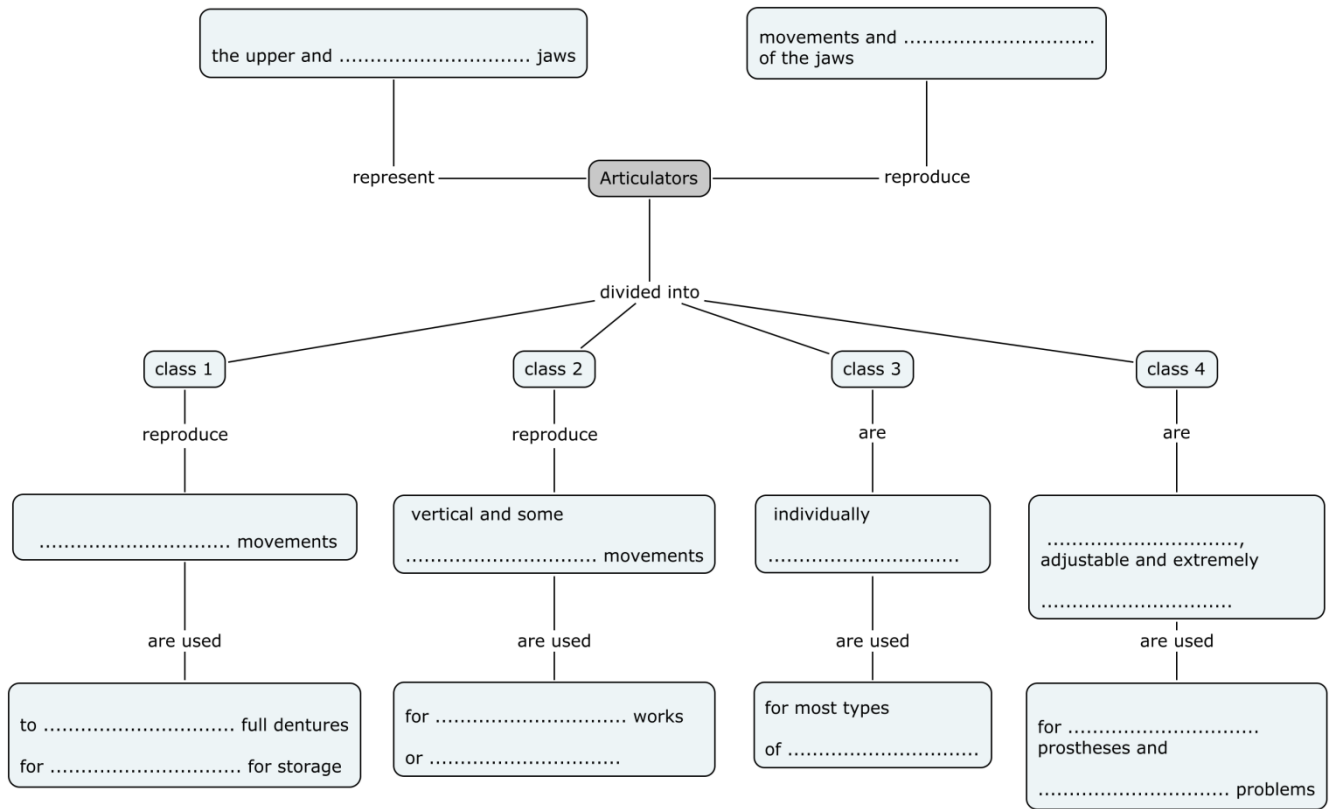
.....

.....

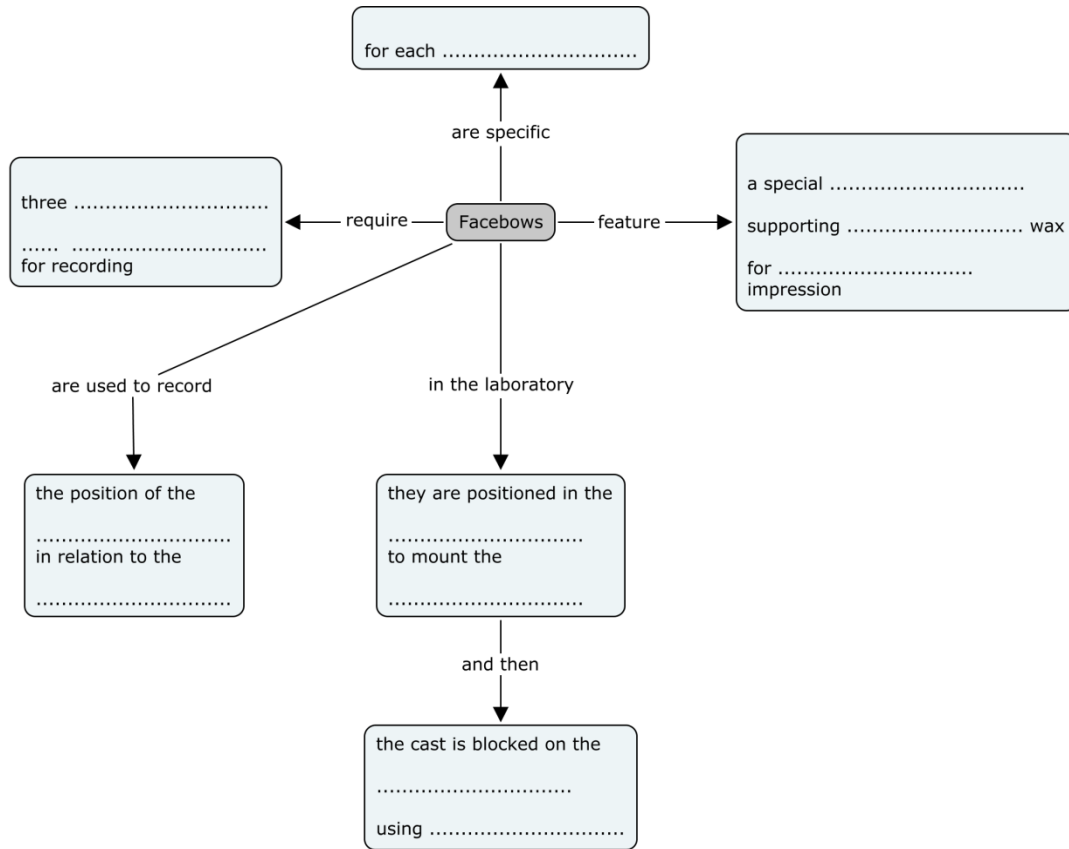
.....

.....

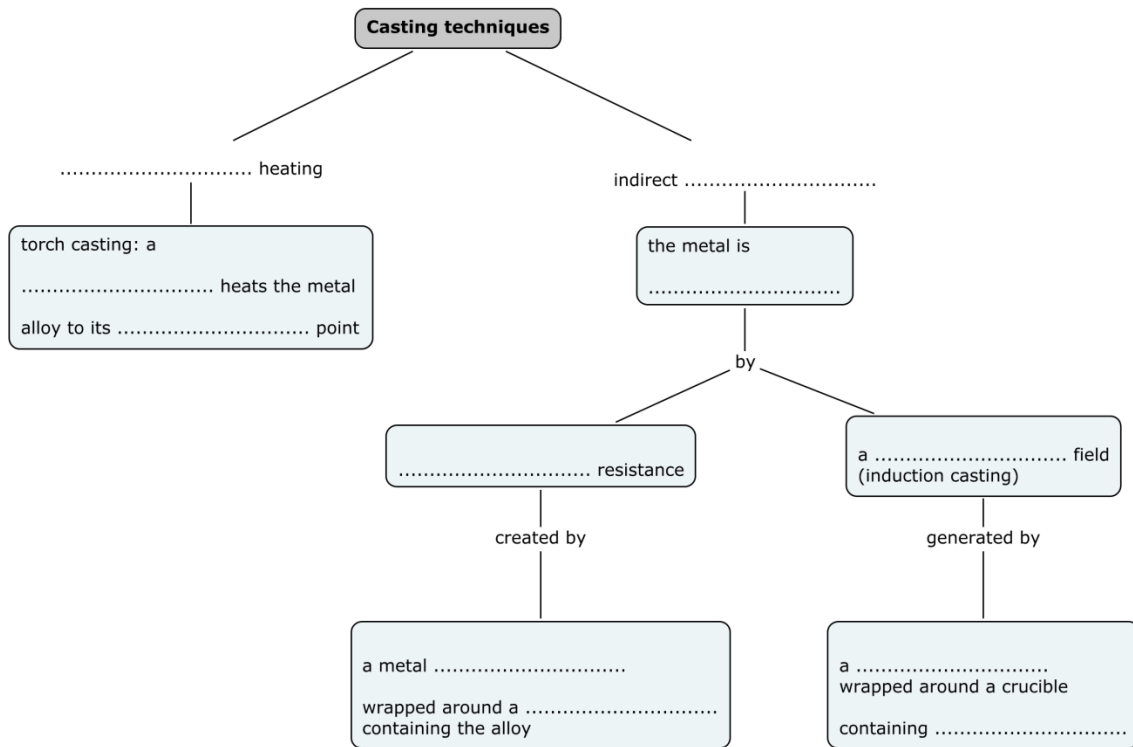
E. Fill in the gaps related to the passage on p. 103.



F. Fill in the gaps related to the passage on p. 104.



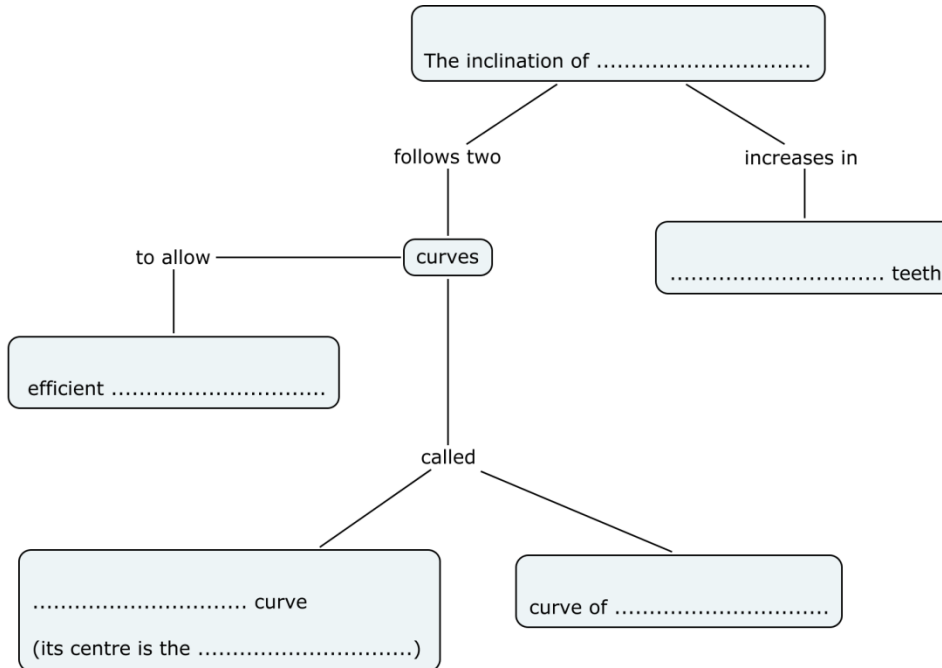
G. Fill in the gaps related to the passage on p. 107.



Unit 10

Esercizi di recupero

A. Fill in the gaps related to the passage on p. 111.



B. Underline the correct option to complete the summary of the passage on p. 112.

Metal free crowns have excellent *aesthetic characteristics / resistance* and are therefore becoming more and more common, thanks to the innovations in the *methods / materials* used. Their greatest advantage is the *light colour / underlying structure* which makes opaquing agents *unnecessary/less expensive*. The most common *materials / disadvantages* are alumina and zircona for *metal/ porcelain* substructures and *elastomers / composites* for resin substructures.

C. Now translate the summary in B using a digital dictionary (not a machine translator!).

D. Underline the correct option to complete the summary of the passages on pp. 113 and 115.

Resin composites are used *both in the lab and in the dentist's practice / very often in the lab but not in the dentist's practice*. They are made of a resin matrix, an inorganic filler, a silane coupling agent and a catalyst. The necessary polymerization reaction can be activated *chemically or by light curing / with special lamps or with impression trays*. The advantages of composites are mainly *the use in larger cavities and their long resistance / the natural colour and the insulation from temperature changes*. The disadvantages, instead, are *easy breakage and staining / patient sensitivity and early wear*.

E. Now translate the summary in D using a digital dictionary (not a machine translator!).

F. Fill in the gaps related to the passage on p. 116.

